



## PC254T-15-4

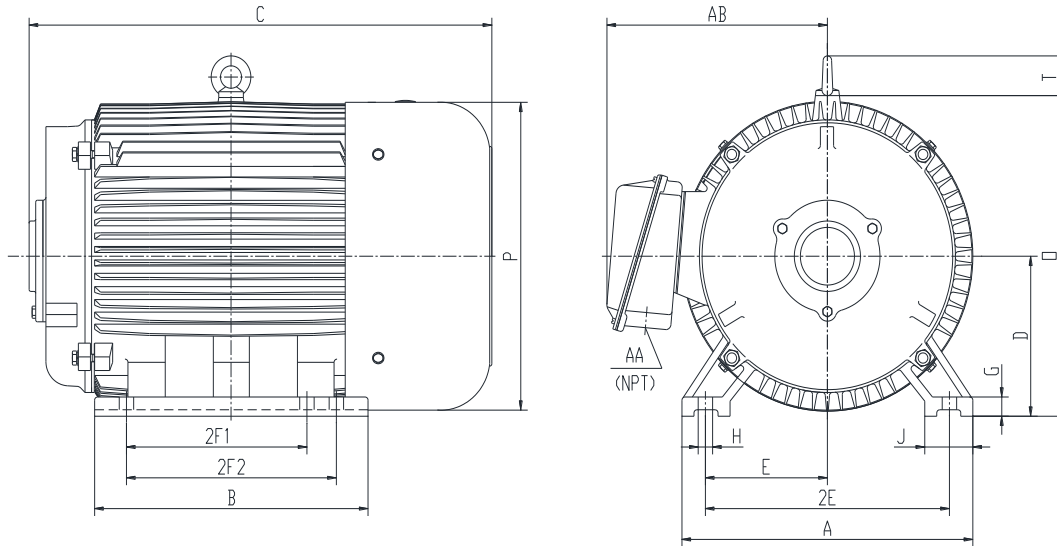
### CONVERTER

DESIGNED FOR USE WITH ROTARY PHASE CONVERTER UNITS

TOTALLY ENCLOSED FAN COOLED

SPIKE RESISTANT WIRE (2200V PEAK VOLTAGE SPIKE RATING)

Factory Certified for T2B Class I, Division II, Groups A,B,C & D and Class II, Division II, Groups F & G



### DIMENSIONS

HP	RPM	Frame	MOUNTING													
			A	B	C	D	G	H	J	E	2E	2F1	2F2	O	P	T
15	1800	254T	13	10.45	19	6.25	0.7	0.53	2.75	5	10	8.25	NA	13	12.4	2.2

Conduit Box		Bearings		Mount
AA	AB	DE	ODE	
1.25	10.1	6309	6309	F1

**BEARING LUBRICATION:** The bearings come lubricated with Mobil Polyrex EM Polyurea Grease. It is recommended that you add some additional lubrication when the motor is installed.

Three options (brands) for suitable lubrication include, but are not limited to, the following:

- 1.) Mobil Polyrex EM
- 2.) Citco Polyurea MP
- 3.) Conoco Phillips Polytac EP





## PC254T-15-4

### CONVERTER

DESIGNED FOR USE WITH ROTARY PHASE CONVERTER UNITS

TOTALLY ENCLOSED FAN COOLED

SPIKE RESISTANT WIRE (2200V PEAK VOLTAGE SPIKE RATING)


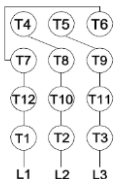



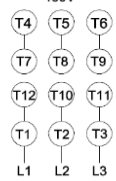
Factory Certified for T2B Class I, Division II, Groups A,B,C & D and Class II, Division II, Groups F & G

### PERFORMANCE DATA

HP	RPM	Frame	Voltage	Frequency (Hz)	Full Load S.F.	Insulation Class	NEMA Design	Slip (%)	NEMA Code	Enclosure Type	IP Rating	Max. Ambient
15	1750	254T	208-230/460	60	1.15	F	B	2.8	G	TEFC	55	40 °C

Amps (460V)		Efficiency (%)		Power Factor	Torque (ft-lb)			DE Bearing	ODE Bearing	Connection	Weight (lbs.)
FLA	LRA	NOM.	MIN.	100%	FLT	LRT %	BDT %				
18.3	116	89.5	87.5	0.84	45	210	250	6309	6309	12 Lead 2Δ/Δ	256

### NAME PLATE

 <b>ROTARY PHASE CONVERTER</b> INVERTER DUTY 20:1 VT; 10:1 CT      Hernando, MS 38632										<b>CONNECTION DIAGRAMS</b>  <b>208-230V</b> 
CAT NO. PC254T-15-4		FRAME 254T		WT/LBS 256						
HZ 60	S.F. 1.15	HZ 50	S.F. 1.0	ENCL TEFC	IP 55					
HP 15	RPM 1800	HP 15	RPM 1500	DUTY CONT	DES B					
VOLTS 208-230/460		VOLTS 190/380		AMB 40 °C	INS F					
AMPS 37.4-36.6/18.3		AMPS 45/22.5		BRG DE/ODE 6309/6309						
CODE G	P.F. 0.84	CODE F	P.F. 0.86	LUB: Mobil Polyrex EM						
EFF 89.5	MIN 87.5	EFF 87.0	MIN 84.0	SER NO						
 <b>AC INDUCTION CONVERTER</b>				 		<b>460V</b> 				

### APPLICATIONS:

Specifically designed for use as the converter component for rotary phase converters.